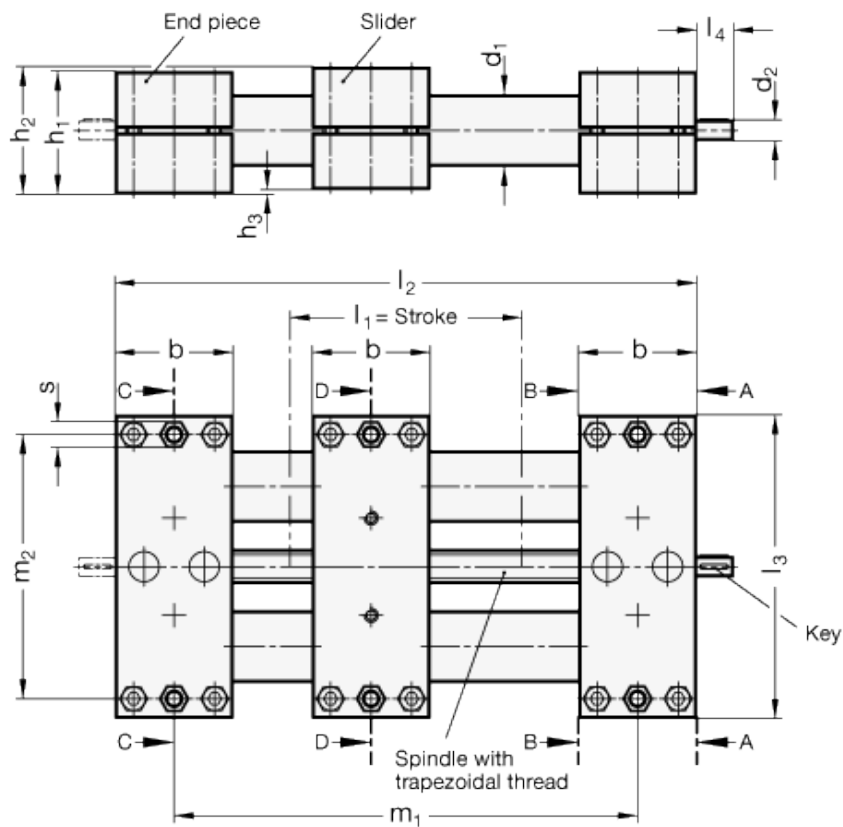


# GN 491

Double tube linear actuators



technical informations  
Guide tube DIN 2391  
Chrome-plated steel SCR.

End pieces/Slider

Aluminium, plastic coated, black RAL 9005, textured finish.  
Fixing surface / mounting surface machined, blank.

### Spindle with trapezoidal thread

Steel blank, with ball-bearing.  
Positioning accuracy  $\pm 0.2\text{mm}/300\text{ mm}$  travel.

### Follower nut

Gun metal.

### Cylinder head screws DIN 912

Zinc-plated steel.

### Hexagon nuts DIN 985

Zinc-plated steel.

### Standard versions available

- Type R1: Right hand thread, single shaft end.
- Type R2: Right hand thread, two shaft ends.
- Type L1: Left hand thread, single shaft end.
- Type L2: Left hand thread, two shaft ends.

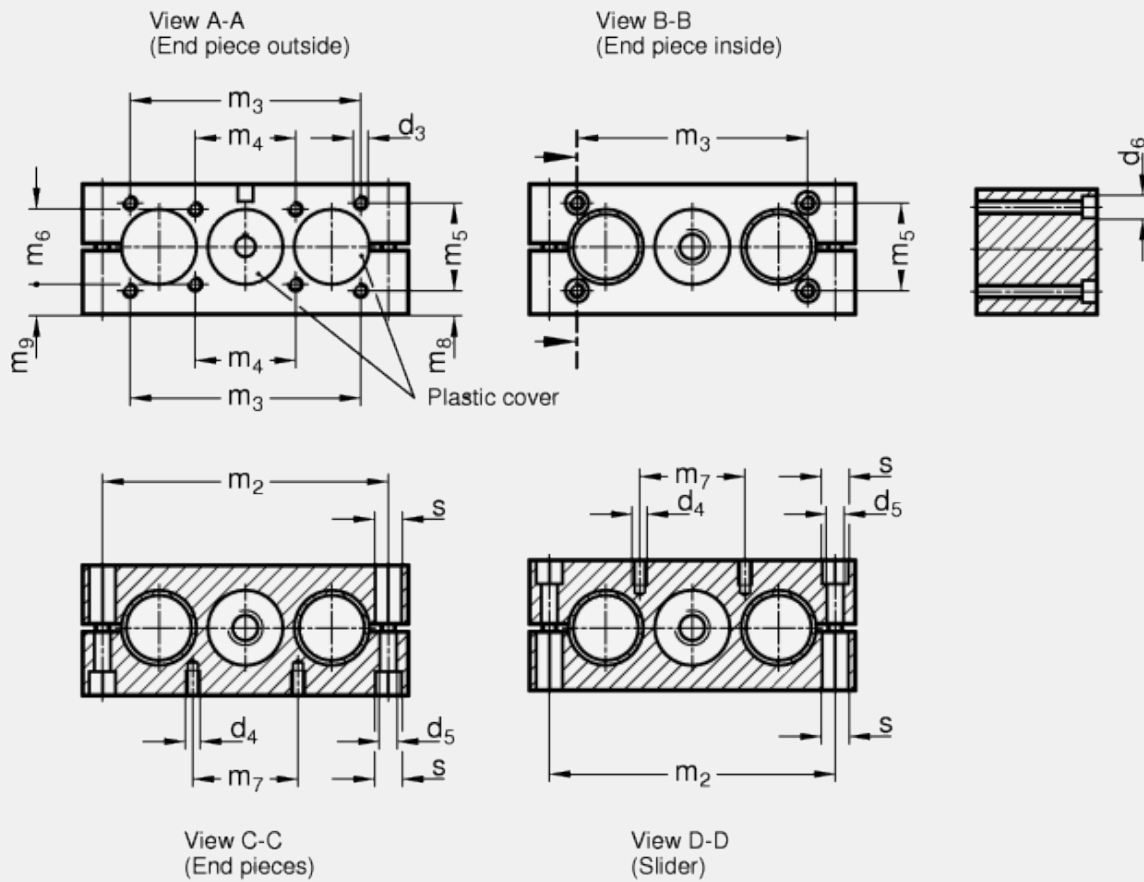
### Version of the shaft ends

- Version 1: short
- Version 2: long (for position indicator)
- Version 3: 1 x short  
1 x long (for position indicator)

### Features and applications

In addition to the standard travel lengths specified in the above table for the double tube linear actuator GN 491 any length inside the maximum length is available.

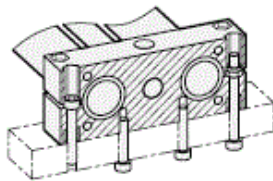
In order to measure the movement and positioning of the sliders, digital position indicators can be added.



### Mounting facilities of the end pieces

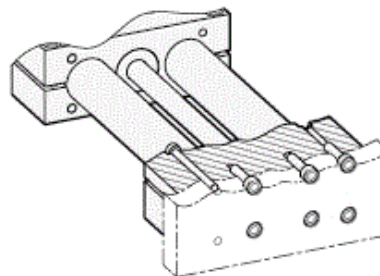
Horizontal

with screws for thread  $d_4$  or bore  $d_5$



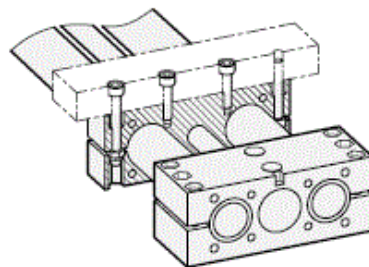
Vertical

From outside, with screws for thread  $d_3$   
From inside, with screws for bore  $d_6$



### Mounting facilities at the slider

Mounting with screws  
for thread  $d_4$  or bore  $d_5$



Description	d <sub>1</sub>	I <sub>1</sub> Stroke	I <sub>1</sub> max. Stroke	b	d <sub>2</sub>	d <sub>3**</sub>	d <sub>4***</sub>	d <sub>5</sub>	d <sub>6</sub>	#	d <sub>7</sub>	#	h <sub>1</sub>	h <sub>2</sub>	h <sub>3</sub>	I <sub>2</sub>	I <sub>3</sub>	I <sub>4</sub> short	I <sub>4</sub> long	m <sub>1</sub>	m <sub>2</sub>	m <sub>3</sub>	m <sub>4</sub>	m <sub>5</sub>	m <sub>6</sub>	m <sub>7</sub>	m <sub>8</sub>	m <sub>9</sub>	s	Sha Thru
GN 491-30-100-R1-1-SCR	30	100	1500	50	8	M 6	6.5	6.5	10	M <sub>5</sub>	11	M <sub>6</sub>	52	54	2	3xb+l <sub>1</sub>	130	16	-	2xb+l <sub>1</sub>	114	92	40	35	30	42	9.5	12	10	TR1
GN 491-30-100-R1-2-SCR	30	100	1500	50	8	M 6	M 6	6.5	10	M <sub>5</sub>	11	M <sub>6</sub>	52	54	2	3xb+l <sub>1</sub>	130	-	49	2xb+l <sub>1</sub>	114	92	40	235	30	42	9.5	12	10	TR1
GN 491-30-150-R1-1-SCR	30	150	1500	50	8	M 6	M 6	6.5	10	M <sub>5</sub>	11	M <sub>6</sub>	52	54	2	3xb+l <sub>1</sub>	130	16	-	2xb+l <sub>1</sub>	114	92	40	35	30	42	9.5	12	10	TR1
GN 491-30-150-R1-2-SCR	30	150	1500	50	8	M 6	M 6	6.5	10	M <sub>5</sub>	11	M <sub>6</sub>	52	54	2	3xb+l <sub>1</sub>	130	-	49	2xb+l <sub>1</sub>	114	92	40	35	30	42	9.5	12	10	TR1
GN 491-30-200-R1-1-SCR	30	200	1500	50	8	M 6	M 6	6.5	10	M <sub>5</sub>	11	M <sub>6</sub>	52	54	2	3xb+l <sub>1</sub>	130	16	-	2xb+l <sub>1</sub>	114	92	40	35	30	42	9.5	12	10	TR1
GN 491-30-200-R1-2-SCR	30	200	1500	50	8	M 6	M 6	6.5	10	M <sub>5</sub>	11	M <sub>6</sub>	52	54	2	3xb+l <sub>1</sub>	130	-	49	2xb+l <sub>1</sub>	114	92	40	35	30	42	9.5	12	10	TR1
GN 491-30-300-R1-1-SCR	30	300	1500	50	8	M 6	M 6	6.5	10	M <sub>5</sub>	11	M <sub>6</sub>	52	54	2	3xb+l <sub>1</sub>	130	16	-	2xb+l <sub>1</sub>	114	92	40	35	30	42	9.5	12	10	TR1
GN 491-30-300-R1-2-SCR	30	300	1500	50	8	M 6	M 6	6.5	10	M <sub>5</sub>	11	M <sub>6</sub>	52	54	2	3xb+l <sub>1</sub>	130	-	49	2xb+l <sub>1</sub>	114	92	40	35	30	42	9.5	12	10	TR1
GN 491-50-100-R1-1-SCR	50	100	2675	72	12	M <sub>10</sub>	M 8	8.5	15	M <sub>8</sub>	15	M <sub>8</sub>	72	76	4	3xb+l <sub>1</sub>	206	18	-	2xb+l <sub>1</sub>	184	150	46	50	46	62	13	15	13	TR2
GN 491-50-100-R1-2-SCR	50	100	2675	72	12	M <sub>10</sub>	M 8	8.5	15	M <sub>8</sub>	15	M <sub>8</sub>	72	76	4	3xb+l <sub>1</sub>	206	-	55	2xb+l <sub>1</sub>	184	150	46	50	46	62	13	15	13	TR2
GN 491-50-150-R1-1-SCR	50	150	267	72	12	M <sub>10</sub>	M 8	8.8	15	M <sub>8</sub>	15	M <sub>8</sub>	72	76	4	3xb+l <sub>1</sub>	206	18	-	2xb+l <sub>1</sub>	184	150	46	50	46	62	13	15	13	TR2
GN 491-50-150-R1-2-SCR	50	150	2675	72	12	M <sub>10</sub>	M 8	8.5	15	M <sub>8</sub>	15	M <sub>8</sub>	72	76	4	3xb+l <sub>1</sub>	206	-	55	2xb+l <sub>1</sub>	184	150	46	50	46	62	13	15	13	TR2
GN 491-50-200-R1-1-SCR	50	200	2675	72	12	M <sub>10</sub>	M 8	8.5	15	M <sub>8</sub>	15	M <sub>8</sub>	72	76	4	3x+bl <sub>1</sub>	206	18	-	2xb+l <sub>1</sub>	184	150	46	50	46	62	13	15	13	TR2
GN 491-50-200-R1-2-SCR	50	200	2675	72	12	M <sub>10</sub>	M 8	8.5	15	M <sub>8</sub>	15	M <sub>8</sub>	72	76	4	3xb+l <sub>1</sub>	206	-	55	2xb+l <sub>1</sub>	184	150	46	50	46	62	13	15	13	TR2
GN 491-50-300-R1-1-SCR	50	300	2675	72	12	M <sub>10</sub>	M 8	8.5	15	M <sub>8</sub>	15	M <sub>8</sub>	72	76	4	3xb+l <sub>1</sub>	206	18	-	2xb+l <sub>1</sub>	184	150	46	50	46	62	13	15	13	TR2
GN 491-50-300-R1-2-SCR	50	300	2675	72	12	M <sub>10</sub>	M 8	8.5	15	M <sub>8</sub>	15	M <sub>8</sub>	72	76	4	3xb+l <sub>1</sub>	206	-	55	2xb+l <sub>1</sub>	184	150	46	50	46	62	13	15	13	TR2
GN 491-30-100-L1-1-SCR*	30	100	1500	50	8	M 6	M 6	6.5	10	M <sub>5</sub>	11	M <sub>6</sub>	52	54	2	3xb+l <sub>1</sub>	130	16	-	2xb+l <sub>1</sub>	114	92	40	35	30	42	9.5	12	10	TR1
GN 491-30-100-L1-2-SCR*	30	100	1500	50	8	M 6	M 6	6.5	10	M <sub>5</sub>	11	M <sub>6</sub>	52	54	2	3xb+l <sub>1</sub>	130	-	49	2xb+l <sub>1</sub>	114	92	40	35	30	42	9.5	12	10	TR1
GN 491-30-150-L1-1-SCR*	30	150	1500	50	8	M 6	M 6	6.5	10	M <sub>5</sub>	11	M <sub>6</sub>	52	54	2	3xb+l <sub>1</sub>	130	16	-	2xb+l <sub>1</sub>	114	92	40	35	30	42	9.5	12	10	TR1
GN 491-30-150-L1-2-SCR*	30	150	1500	50	8	M 6	M 6	6.5	10	M <sub>5</sub>	11	M <sub>6</sub>	52	54	2	3xb+l <sub>1</sub>	130	-	49	2xb+l <sub>1</sub>	114	92	40	35	30	42	9.5	12	10	TR1

GN 491-30-200-L1-1-SCR*	30	200	1500	50	8	M 6	M 6	6.5	10	M <sub>5</sub>	11	M <sub>6</sub>	52	54	2	3xb+l <sub>1</sub>	130	16	-	2xb+l <sub>1</sub>	114	92	40	35	30	42	9.5	12	10	TR1
GN 491-30-200-L1-2-SCR*	30	200	1500	50	8	M 6	M 6	6.5	10	M <sub>5</sub>	11	M <sub>6</sub>	52	54	2	3xb+l <sub>1</sub>	130	-	49	2xb+l <sub>1</sub>	114	92	40	35	30	42	9.5	12	10	TR1
GN 491-30-300-L1-1-SCR*	30	300	1500	50	8	M 6	M 6	6.5	10	M <sub>5</sub>	11	M <sub>6</sub>	52	54	2	3xb+l <sub>1</sub>	130	16	-	2xb+l <sub>1</sub>	114	92	40	35	30	42	9.5	12	10	TR1
GN 491-30-300-L1-2-SCR*	30	300	1500	50	8	M 6	M 6	6.5	10	M <sub>5</sub>	11	M <sub>6</sub>	52	54	2	3xb+l <sub>1</sub>	130	-	49	2xb+l <sub>1</sub>	114	92	40	35	30	42	9.5	12	10	TR1
GN 491-50-100-L1-1-SCR*	50	100	2675	72	12	M <sub>10</sub>	M 8	8.5	15	M <sub>8</sub>	15	M <sub>8</sub>	72	76	4	3xb+l <sub>1</sub>	206	18	-	2xb+l <sub>1</sub>	184	150	46	50	46	62	13	15	13	TR2
GN 491-50-100-L1-2-SCR*	50	100	2675	72	12	M <sub>10</sub>	M 8	8.5	15	M <sub>8</sub>	15	M <sub>8</sub>	72	76	4	3xb+l <sub>1</sub>	206	-	55	2xb+l <sub>1</sub>	184	150	46	50	46	62	13	15	13	TR2
GN 491-50-150-L1-1-SCR*	50	150	2675	72	12	M <sub>10</sub>	M 8	8.5	15	M <sub>8</sub>	15	M <sub>8</sub>	72	76	4	3xb+l <sub>1</sub>	206	18	-	2xb+l <sub>1</sub>	184	150	46	50	46	62	13	15	13	TR2
GN 491-50-150-L1-2-SCR*	50	150	2675	72	12	M <sub>10</sub>	M 8	8.5	15	M <sub>8</sub>	15	M <sub>8</sub>	72	76	4	3xb+l <sub>1</sub>	206	-	55	2xb+l <sub>1</sub>	184	150	46	50	46	62	13	15	13	TR2
GN 491-50-200-L1-1-SCR*	50	200	2675	72	12	M <sub>10</sub>	M 8	8.5	15	M <sub>8</sub>	15	M <sub>8</sub>	72	76	4	3xb+l <sub>1</sub>	206	18	-	2xb+l <sub>1</sub>	184	150	46	50	46	62	13	15	13	TR2
GN 491-50-200-L1-2-SCR*	50	200	2675	72	12	M <sub>10</sub>	M 8	8.5	15	M <sub>8</sub>	15	M <sub>8</sub>	72	76	4	3xb+l <sub>1</sub>	206	-	55	2xb+l <sub>1</sub>	184	150	46	50	46	62	13	15	13	TR2
GN 491-50-300-L1-1-SCR*	50	300	2675	72	12	M <sub>10</sub>	M 8	8.5	15	M <sub>8</sub>	15	M <sub>8</sub>	72	76	4	3xb+l <sub>1</sub>	206	18	-	2xb+l <sub>1</sub>	184	150	46	50	46	62	13	15	13	TR2
GN 491-50-300-L1-2-SCR*	50	300	2675	72	12	M <sub>10</sub>	M 8	8.5	15	M <sub>8</sub>	15	M <sub>8</sub>	72	76	4	3xb+l <sub>1</sub>	206	-	55	2xb+l <sub>1</sub>	184	150	46	50	46	62	13	15	13	TR2
GN 491-30-100-R2-1-SCR*	30	100	1500	50	8	M 6	M 6	6.5	10	M <sub>5</sub>	11	M <sub>6</sub>	52	54	2	3xb+l <sub>1</sub>	130	16	-	2xb+l <sub>1</sub>	114	92	40	35	30	42	9.5	12	10	TR1
GN 491-30-100-R2-2-SCR*	30	100	1500	50	8	M 6	M 6	6.5	10	M <sub>5</sub>	11	M <sub>6</sub>	52	54	2	3xb+l <sub>1</sub>	130	-	49	2xb+l <sub>1</sub>	114	92	40	35	30	42	9.5	12	10	TR1
GN 491-30-100-R2-3-SCR*	30	100	1500	50	8	M 6	M 6	6.5	10	M <sub>5</sub>	11	M <sub>6</sub>	52	54	2	3xb+l <sub>1</sub>	130	16	49	2xb+l <sub>1</sub>	114	92	40	35	30	42	9.5	12	10	TR1
GN 491-30-150-R2-1-SCR*	30	150	1500	450	8	M 6	M 6	6.5	10	M <sub>5</sub>	11	M <sub>6</sub>	52	54	2	3xb+l <sub>1</sub>	130	16	-	2xb+l <sub>1</sub>	114	92	40	35	30	42	9.5	12	10	TR1
GN 491-30-150-R2-2-SCR*	30	150	1500	50	8	M 6	M 6	6.5	10	M <sub>5</sub>	11	M <sub>6</sub>	52	54	2	3xbl <sub>1</sub>	130	-	49	2xb+l <sub>1</sub>	114	92	40	35	30	42	9.5	12	10	TR1
GN 491-30-150-R2-3-SCR*	30	150	1500	50	8	M 6	M 6	6.5	10	M <sub>5</sub>	11	M <sub>6</sub>	52	54	2	3xb+l <sub>1</sub>	130	16	49	2xb+l <sub>1</sub>	114	92	40	35	30	42	9.5	12	10	TR1
GN 491-30-200-R2-1-SCR*	30	200	1500	50	8	M 6	M 6	6.5	10	M <sub>5</sub>	11	M <sub>6</sub>	52	54	2	3xb+l <sub>1</sub>	130	16	-	2xb+l <sub>1</sub>	114	92	40	35	30	42	9.5	12	10	TR1
GN 491-30-200-R2-2-SCR*	30	200	1500	50	8	M 6	M 6	6.5	10	M <sub>5</sub>	11	M <sub>6</sub>	52	54	2	3xb+l <sub>1</sub>	130	-	49	2xb+l <sub>1</sub>	114	92	40	35	30	42	9.5	12	10	TR1
GN 491-30-200-R2-3-SCR*	30	200	1500	50	8	M 6	M 6	6.5	10	M <sub>5</sub>	11	M <sub>6</sub>	52	54	2	3xb+l <sub>1</sub>	130	16	49	2xb+l <sub>1</sub>	114	92	40	35	30	42	9.5	12	10	TR1
GN 491-30-300-R2-1-SCR*	30	300	1500	50	8	M 6	M 6	6.5	10	M <sub>5</sub>	11	M <sub>6</sub>	52	54	2	3xb+l <sub>1</sub>	130	16	-	2xb+l <sub>1</sub>	114	92	40	35	30	42	9.5	12	10	TR1

GN 491-30-300-R2-2-SCR*	30	300	1500	50	8	M 6	M 6	6.5	10	M <sub>5</sub>	11	M <sub>6</sub>	52	54	2	3xb+l <sub>1</sub>	130	-	49	2xb+l <sub>1</sub>	114	92	40	35	30	42	29.5	12	10	TR1
GN 491-30-300-R2-3-SCR*	30	300	1500	50	8	M 6	M 6	6.5	10	M <sub>5</sub>	11	M <sub>6</sub>	52	54	2	3xb+l <sub>1</sub>	130	16	49	2xb+l <sub>1</sub>	114	92	40	35	30	42	9.5	12	10	TR1
GN 491-50-100-R2-1-SCR*	50	100	2675	72	12	M 10	M 8	8.5	15	M <sub>8</sub>	15	M <sub>8</sub>	72	76	4	3xb+l <sub>1</sub>	130	18	-	2xb+l <sub>1</sub>	184	150	46	50	46	62	13	15	13	TR2
GN 491-50-100-R2-2-SCR*	50	100	2675	72	12	M 10	M 8	8.5	15	M <sub>8</sub>	15	M <sub>8</sub>	72	76	4	3xb+l <sub>1</sub>	206	-	55	2xb+l <sub>1</sub>	184	150	46	50	46	62	13	15	13	TR2
GN 491-50-100-R2-3-SCR*	50	100	2675	72	12	M 10	M 8	8.5	15	M <sub>8</sub>	15	M <sub>8</sub>	72	76	4	3xb+l <sub>1</sub>	206	18	55	2xb+l <sub>1</sub>	184	150	46	50	46	62	13	15	13	TR2
GN 491-50-150-R2-1-SCR*	50	150	2675	72	12	M 10	M 8	8.5	15	M <sub>8</sub>	15	M <sub>8</sub>	72	76	4	3xb+l <sub>1</sub>	206	18	-	2xb+l <sub>1</sub>	184	150	46	50	46	62	13	15	13	TR2
GN 491-50-150-R2-2-SCR*	50	150	2675	72	12	M 10	M 8	8.5	15	M <sub>8</sub>	15	M <sub>8</sub>	72	76	4	3xb+l <sub>1</sub>	206	-	55	2xb+l <sub>1</sub>	184	150	46	50	46	62	13	15	13	TR2
GN 491-50-150-R2-3-SCR*	50	150	2675	72	12	M 10	M 8	8.5	15	M <sub>8</sub>	15	M <sub>8</sub>	72	76	4	3xb+l <sub>1</sub>	206	18	55	2xb+l <sub>1</sub>	184	150	46	50	46	62	13	15	13	TR2
GN 491-50-200-R2-1-SCR*	50	200	2675	72	12	M 10	M 8	8.5	15	M <sub>8</sub>	15	M <sub>8</sub>	72	76	4	3xb+l <sub>1</sub>	206	18	-	2xb+l <sub>1</sub>	184	150	46	50	46	62	13	15	13	TR2
GN 491-50-200-R2-2-SCR*	50	200	2675	72	12	M 10	M 8	8.5	15	M <sub>8</sub>	15	M <sub>8</sub>	72	76	4	3xb+l <sub>1</sub>	206	-	55	2xb+l <sub>1</sub>	184	150	46	50	46	62	13	15	13	TR2
GN 491-50-200-R2-3-SCR*	50	200	2675	72	12	M 10	M 8	8.5	15	M <sub>8</sub>	15	M <sub>8</sub>	72	76	4	3xb+l <sub>1</sub>	206	18	55	2xb+l <sub>1</sub>	184	150	46	50	46	62	13	15	13	TR2
GN 491-50-300-R2-1-SCR*	50	300	2675	72	12	M 10	M 8	8.5	15	M <sub>8</sub>	15	M <sub>8</sub>	72	76	4	3xb+l <sub>1</sub>	206	18	-	2xb+l <sub>1</sub>	184	150	46	50	46	62	13	15	13	TR2
GN 491-50-300-R2-2-SCR*	50	300	2675	72	12	M 10	M 8	8.5	15	M <sub>8</sub>	15	M <sub>8</sub>	72	76	4	3xb+l <sub>1</sub>	206	-	55	2xb+l <sub>1</sub>	184	150	46	50	46	62	13	15	13	TR2
GN 491-50-300-R2-3-SCR*	50	300	2675	72	12	M 10	M 8	8.5	15	M <sub>8</sub>	15	M <sub>8</sub>	72	76	4	3xb+l <sub>1</sub>	206	18	55	2xb+l <sub>1</sub>	184	150	46	50	46	62	13	15	13	TR2
GN 491-30-100-L2-1-SCR*	30	100	1500	50	8	M 6	M 6	6.5	10	M <sub>5</sub>	11	M <sub>6</sub>	52	54	2	3xb+l <sub>1</sub>	130	16	-	2xb+l <sub>1</sub>	114	92	40	35	30	42	9.5	12	10	TR1
GN 491-30-100-L2-2-SCR*	30	100	1500	50	8	M 6	M 6	6.5	10	M <sub>5</sub>	11	M <sub>6</sub>	52	54	2	3xb+l <sub>1</sub>	130	-	49	2xb+l <sub>1</sub>	114	92	40	35	30	42	9.5	12	10	TR1
GN 491-30-100-L2-3-SCR*	30	100	1500	50	8	M 6	M 6	6.5	10	M <sub>5</sub>	11	M <sub>6</sub>	52	54	2	3xb+l <sub>1</sub>	130	16	49	2xb+l <sub>1</sub>	114	92	40	35	30	42	9.5	12	10	TR1
GN 491-30-150-L2-1-SCR*	30	150	1500	50	8	M 6	M 6	6.5	10	M <sub>5</sub>	11	M <sub>6</sub>	52	54	2	3xb+l <sub>1</sub>	130	16	-	2xb+l <sub>1</sub>	114	92	40	35	30	42	9.5	12	10	TR1
GN 491-30-150-L2-2-SCR*	30	150	1500	50	8	M 6	M 6	6.5	10	M <sub>5</sub>	11	M <sub>6</sub>	52	54	2	3xb+l <sub>1</sub>	130	-	49	2xb+l <sub>1</sub>	114	92	40	35	30	42	9.5	12	10	TR1
GN 491-30-150-L2-3-SCR*	30	150	1500	50	8	M 6	M 6	6.5	10	M <sub>5</sub>	11	M <sub>6</sub>	52	54	2	3xb+l <sub>1</sub>	130	16	49	2xb+l <sub>1</sub>	114	92	40	35	30	42	9.5	12	10	TR1
GN 491-30-200-L2-1-SCR*	30	200	1500	50	8	M 6	M 6	6.5	10	M <sub>5</sub>	11	M <sub>6</sub>	52	54	2	3xb+l <sub>1</sub>	130	16	-	2xb+l <sub>1</sub>	114	92	40	35	30	42	9.5	12	10	TR1
GN 491-30-200-L2-2-SCR*	30	200	1500	50	8	M 6	M 6	6.5	10	M <sub>5</sub>	11	M <sub>6</sub>	52	54	2	3xb+l <sub>1</sub>	130	-	49	2xb+l <sub>1</sub>	114	92	40	35	30	42	9.5	12	10	TR1

GN 491-30-200-L2-3-SCR*	30	200	1500	50	8	M 6	M 6	6.5	10	M <sub>5</sub>	11	M <sub>6</sub>	52	54	2	3xb+l <sub>1</sub>	130	16	49	2xb+l <sub>1</sub>	114	92	40	35	30	42	9.5	12	10	TR1
GN 491-30-300-L2-1-SCR*	30	300	1500	50	8	M 6	M 6	6.5	10	M <sub>5</sub>	11	M <sub>6</sub>	52	54	2	3xb+l <sub>1</sub>	130	16	-	2xb+l <sub>1</sub>	114	92	40	35	30	42	9.5	12	10	TR1
GN 491-30-300-L2-2-SCR*	30	300	1500	50	8	M 6	M 6	6.5	10	M <sub>5</sub>	11	M <sub>6</sub>	52	54	2	3xb+l <sub>1</sub>	130	-	49	2xb+l <sub>1</sub>	114	92	40	35	30	42	9.5	12	10	TR1
GN 491-30-300-L2-3-SCR*	30	300	1500	50	8	M 6	M 6	6.5	10	M <sub>5</sub>	11	M <sub>6</sub>	52	54	2	3xb+l <sub>1</sub>	130	16	49	2xb+l <sub>1</sub>	114	92	40	35	30	42	9.5	12	10	TR1
GN 491-50-100-L2-1-SCR*	50	100	2675	72	12	M <sub>10</sub>	M 8	8.5	15	M <sub>8</sub>	15	M <sub>8</sub>	72	76	4	3xb+l <sub>1</sub>	206	18	-	2xb+l <sub>1</sub>	184	150	46	50	46	62	13	15	13	TR2
GN 491-50-100-L2-2-SCR*	50	100	2675	72	12	M <sub>10</sub>	M 8	8.5	15	M <sub>8</sub>	15	M <sub>8</sub>	72	76	4	3xb+l <sub>1</sub>	206	-	55	2xb+l <sub>1</sub>	184	150	46	50	46	62	13	15	13	TR2
GN 491-50-100-L2-3-SCR*	50	100	2675	72	12	M <sub>10</sub>	M 8	8.5	15	M <sub>8</sub>	15	M <sub>8</sub>	72	76	4	3xb+l <sub>1</sub>	206	18	55	2xb+l <sub>1</sub>	184	150	46	50	46	62	13	15	13	TR2
GN 491-50-150-L2-1-SCR*	50	150	2675	72	12	M <sub>10</sub>	M 8	8.5	15	M <sub>8</sub>	15	M <sub>8</sub>	72	76	4	3xb+l <sub>1</sub>	206	18	-	2xb+l <sub>1</sub>	184	150	46	50	46	62	13	15	13	TR2
GN 491-50-150-L2-2-SCR*	50	150	2675	72	12	M <sub>10</sub>	M 8	8.5	15	M <sub>8</sub>	15	M <sub>8</sub>	72	76	4	3xb+l <sub>1</sub>	206	-	55	2xb+l <sub>1</sub>	184	150	46	50	46	62	13	15	13	TR2
GN 491-50-150-L2-3-SCR*	50	150	2675	72	12	M <sub>10</sub>	M 8	8.5	15	M <sub>8</sub>	15	M <sub>8</sub>	72	76	4	3xb+l <sub>1</sub>	206	18	55	2xb+l <sub>1</sub>	184	150	46	50	46	62	13	15	13	TR2
GN 491-50-200-L2-1-SCR*	50	200	2675	72	12	M <sub>10</sub>	M 8	8.5	15	M <sub>8</sub>	15	M <sub>8</sub>	72	76	4	3xb+l <sub>1</sub>	206	18	-	2xb+l <sub>1</sub>	184	150	46	50	46	62	13	15	13	TR2
GN 491-50-200-L2-2-SCR*	50	200	2675	72	12	M <sub>10</sub>	M 8	8.5	15	M <sub>8</sub>	15	M <sub>8</sub>	72	76	4	3xb+l <sub>1</sub>	206	-	55	2xb+l <sub>1</sub>	184	150	46	50	46	62	13	15	13	TR2
GN 491-50-200-L2-3-SCR*	50	200	2675	72	12	M <sub>10</sub>	M 8	8.5	15	M <sub>8</sub>	15	M <sub>8</sub>	72	76	4	3xb+l <sub>1</sub>	206	18	55	2xb+l <sub>1</sub>	184	150	46	50	46	62	13	15	13	TR2
GN 491-50-300-L2-1-SCR*	50	300	2675	72	12	M <sub>10</sub>	M 8	8.5	15	M <sub>8</sub>	15	M <sub>8</sub>	72	76	4	3xb+l <sub>1</sub>	206	18	-	2xb+l <sub>1</sub>	184	150	46	50	46	62	13	15	13	TR2
GN 491-50-300-L2-2-SCR*	50	300	2675	72	12	M <sub>10</sub>	M 8	8.5	15	M <sub>8</sub>	15	M <sub>8</sub>	72	76	4	3xb+l <sub>1</sub>	206	-	55	2xb+l <sub>1</sub>	184	150	46	50	46	62	13	15	13	TR2
GN 491-50-300-L2-3-SCR*	50	300	2675	72	12	M <sub>10</sub>	M 8	8.5	15	M <sub>8</sub>	02	M <sub>8</sub>	72	76	4	3xb+l <sub>1</sub>	206	18	55	2xb+l <sub>1</sub>	184	150	46	50	46	62	13	15	13	TR2

\* normally not available from stock \*\* usable depth of thread min.  $2 \times d_3$  \*\*\* usable depth of thread min.  $1.5 \times d_4$  # for screw DIN 912



ELESA and GANTER models all rights reserved in accordance with the law. Always mention the source when reproducing our drawings.

STANDARD MACHINE ELEMENTS WORLDWIDE